

Appendix C

Public Open House and
Comment Form Summary



LARDEAU REGIONAL PARK MANAGEMENT PLAN

Summary of Input from Community Open House Events

On May 13 and 14, 2019, two open houses were held regarding the Lardeau Regional Park Management Plan. In addition to these open houses, a third engagement event was held on-site at the Lardeau Regional Park on May 15. The purpose of these events was to present the results from the online survey and gauge participants support of various aspects of the project, including the vision, objectives, and concept plan elements. Participants were given the opportunity to participate in a group discussion, ask questions and complete a questionnaire. Responses to the questionnaire from each event are summarized below. Where possible, comments were consolidated by topic.

Lardeau Valley Community Club Open House – 6:30pm, May 13, 2019

- Approximately 38 participants



The first five questions on the Open House Questionnaire asked participants to indicate their level of support for the draft vision and objectives for the Draft Management Plan, as well as their level of support for each of the concept options. The responses for each question are listed below in order to show the overall level of support for each part of the plan. The level of support that was chosen by the most participants has been shaded in grey.



Statement	Response	Number of Responses
I support the draft vision statement	Strongly Disagree	1
	Disagree	0
	Neutral	3
	Agree	4
	Strongly Agree	8
I support the draft objectives	Strongly Disagree	1
	Disagree	2
	Neutral	2
	Agree	4
	Strongly Agree	8
I support the option A1 draft concept plan	Strongly Disagree	3
	Disagree	0
	Neutral	3
	Agree	2
	Strongly Agree	4
I support the option A2 draft concept plan	Strongly Disagree	10
	Disagree	2
	Neutral	0
	Agree	0
	Strongly Agree	4
I support the option B draft concept plan	Strongly Disagree	7
	Disagree	1
	Neutral	2
	Agree	0
	Strongly Agree	2

The last three questions asked participants to expand upon which elements of the concepts they agreed or disagreed with and gave participants an opportunity to provide any other comments. Participant responses are summarized below in order of importance based on the number of times a topic was mentioned (indicated by the numbers in brackets).

Question	Responses
What elements of the concept options do you most agree with?	<ul style="list-style-type: none"> • Washroom/pit toilet (8) • Preservation of natural environment/minimising development/limiting motorized access (7) • Wharf (7) • Increased management and local control (2) • Crown land acquisition (2) • Extra parking • Additional parking away from view areas and riparian areas • Six trailer spots



	<ul style="list-style-type: none"> • Keep it Simple Stupid (KISS)
<p>What elements of the concept options do you most disagree with?</p>	<ul style="list-style-type: none"> • Wharf – encourages motorized access and more intense use (8) • Picnic tables/Day camping (3) • Increasing trailer parking • Any development
<p>Any other comments?</p>	<ul style="list-style-type: none"> • Concern for increase in traffic – could an alternate access be a possibility (3) • Need to conduct a wharf needs analysis and analysis for an appropriate wharf location (3) • Promote non-motorized uses (EG: kayaks) (2) • Vision is missing boating activity • North wind is a danger for boaters - SAR may examine problems boating in a north wind • “I am concerned that the people who started this are not even going to be around in 10 years - I wish younger people came to meetings” • I would like to see more discussion and input about why people come to the area • Consider the lost ledge site for wharf location - minimal disruption to residents, infrastructure largely in place now • “I am extremely afraid of how this will split the community and the unknown effects of a wharf ie. traffic, noise” • “No wharf, less motorized boat traffic, fewer tourists, leave the place alone, give it back” • “I strongly urge the RDCK to adopt the same model of park as the Balfour Beach Regional Park which preserves access to a pristine waterfront and riparian environment. If a dock goes in, north Kootenay Lake and specifically the community of Lardeau will change. Most of us are here for the serenity and quiet - that will disappear. The thought of that makes me very sad.” • “No wharf - because there has been a significant rise in the number of non-motorized watercraft on the lake. The reasons for that are formation of an unofficial rowing club in Lardeau and Davis Creek Campground now rents kayaks and paddle boards. The north end of the lake is a wildlife

	<p>reserve and increased boat traffic will impact life on the Lardeau River”</p> <ul style="list-style-type: none"> • “Thanks for the well-run meeting”
<p>Comments (on stickies) placed on presentation boards</p>	<ul style="list-style-type: none"> • Wharf = larger boats Noise to lost ledge • 10 years, 15 years from now?? • 3rd Ave access? Traffic flow + • No to wharf, consider the future –5–10–15 ++ yrs Lardeau is to small – if developed Lardeau cannot • ? environmental <u>impact on</u> <ul style="list-style-type: none"> ○ Fish ○ Birds – loons breeding grounds ○ <u>Garbage, Water pollution</u> • More traffic in the village of Lardeau safety for summer kids

Kaslo Seniors Hall Open House – 6:30pm, May 14, 2019

- Approximately 15 participants



The following responses have been arranged in the same manner as the responses from the May 13 Open House.

Statement	Response	Number of Responses
<p>I support the draft vision statement</p>	Strongly Disagree	0
	Disagree	0
	Neutral	0
	Agree	4
	Strongly Agree	5



I support the draft objectives	Strongly Disagree	0
	Disagree	0
	Neutral	0
	Agree	2
	Strongly Agree	5
I support the option A1 draft concept plan	Strongly Disagree	2
	Disagree	0
	Neutral	2
	Agree	2
	Strongly Agree	0
I support the option A2 draft concept plan	Strongly Disagree	1
	Disagree	0
	Neutral	4
	Agree	0
	Strongly Agree	0
I support the option B draft concept plan	Strongly Disagree	0
	Disagree	0
	Neutral	0
	Agree	4
	Strongly Agree	3

The responses for questions 6-8 are summarized below:

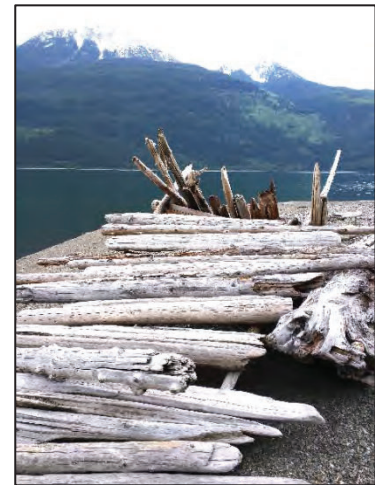
Question	Responses
What elements of the concept options do you most agree with?	<ul style="list-style-type: none"> • Acquisition of crown land (8) • Rehabilitation of wilderness (3) • Control of human uses - management with sensitivity (2) • Public access to foreshore • Decreasing motorized traffic • Encouraging foot traffic
What elements of the concept options do you most disagree with?	<ul style="list-style-type: none"> • Wharf (2)
Any other comments?	<ul style="list-style-type: none"> • There are many questions about the wharf - need to know more about the wharf structure (2) • “Thank you for presentation and proactivity on land use control” • “There is so much avian life along this shoreline - sandpipers, loons, geese, etc. - and lake otters!”



<p>Comments (on stickies) placed on presentation boards</p>	<ul style="list-style-type: none"> • Yes! Include the addition
--	---

Lardeau Regional Park Open House 10 am – 12:00 pm, May 15, 2019

- 10 Lardeau residents participated



Two questionnaires were completed and submitted during this event. The following responses have been arranged in the same manner as the responses from the May 13 Open House.

Statement	Response	Number of Responses
<p>I support the draft vision statement</p>	Strongly Disagree	0
	Disagree	0
	Neutral	0
	Agree	2
	Strongly Agree	0
<p>I support the draft objectives</p>	Strongly Disagree	0
	Disagree	0
	Neutral	0
	Agree	1
	Strongly Agree	0
<p>I support the option A1 draft concept plan</p>	Strongly Disagree	0
	Disagree	0
	Neutral	0
	Agree	1
	Strongly Agree	0



I support the option A2 draft concept plan	Strongly Disagree	0
	Disagree	0
	Neutral	1
	Agree	0
	Strongly Agree	0
I support the option B draft concept plan	Strongly Disagree	0
	Disagree	0
	Neutral	0
	Agree	0
	Strongly Agree	1

The responses for questions 6-8 are summarized below:

Question	Responses
What elements of the concept options do you most agree with?	<ul style="list-style-type: none"> • Wharf - for safe boat launch and retrieval • Enhanced parking in existing location • RDCK maintaining control of the land under license of occupation rather than letting it return to the Crown
What elements of the concept options do you most disagree with?	<ul style="list-style-type: none"> • Park development • Eliminating motorized boat access from the north end of the lake
Any other comments?	<ul style="list-style-type: none"> • No mention of motorized boat uses in vision • Don't advertise the park to increase usage • "I would not like to see the land developed into a more fullsome "park" (ie. Space for events) and especially never to be turned into a campground" • "I understood the desire on the part of some for a wharf but this is not a high priority for our household even though we regularly use the boat launch"



The following themes and concerns were expressed by participants

Responses
<ul style="list-style-type: none">• Be aware of and support parking demand for Davis Creek trail users (grind-like hike)• Local citizen provided information collected in 2010 from an informal survey to gauge local support for a proposed Nature Reserve between the existing RDCK LoO and Davis Creek. 50 of 70 locals identified desire to protect entire crown land.• Consider providing shaded parking• Consider provision of overflow parking• Support protection of land to south of LoO to be managed to address open defecation and fires• No wharf• Keep cars away from shore-support habitat for birds, snakes and salamanders• Possibility of keeping more trees in the trailer parking area• 21 motorized boats in Lardeau• Over 40 non-motorized boats in Lardeau, paddling sports are becoming more popular• Is ATV use on shore appropriate? -could impact nesting birds• Grouse live along high water, ginger patch north of boat launch, moose, chickadee, 197 species of birds here• Consider invasive species control- zebra mussels, etc.• Consider ongoing maintenance of boat launch

LARDEAU REGIONAL PARK MANAGEMENT PLAN

The Regional District of Central Kootenay (RDCK) has initiated the preparation of a Park Management Plan for the Lardeau Regional Park. Regional parks are public recreation assets that are significant not only to their immediate communities, but the entire Kootenay region and beyond. The Lardeau Regional Park is owned by the Province of BC and is currently operated by the RDCK through a License of Occupation (LoO); an arrangement that commits the RDCK to provide appropriate facilities that encourage responsible use, protect natural resources and reflect the character of the community. The RDCK has committed to continuing public engagement to inform a park management plan that provides strategic direction for how the park is managed in the long term.

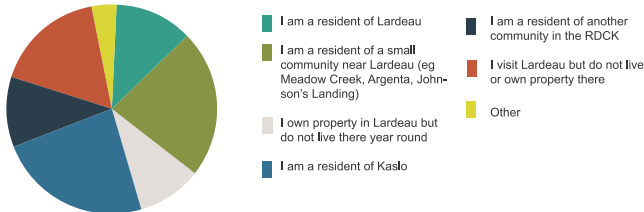


COMMUNITY ENGAGEMENT

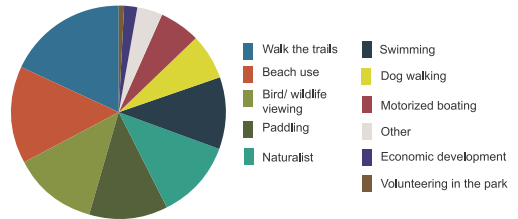
From November 27 2018 - January 15, 2019 an online survey was open to provide the public the opportunity to submit input on the preparation of a Park Management Plan for the Lardeau Regional Park. Hard copy forms were available upon request. There was a total of 548 responses to the survey.

Of those, 190 were complete, for a completion rate of 35%. The survey gave opportunities for open ended questions so that respondents could give more general feedback outside the bounds of the survey.

Who Participated in the Survey?



How Would You Use the Park?



What Are Your Priorities For This Park?



Environmental Protection



Limit vehicular access to sensitive areas



Riparian enhancements

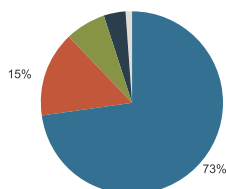


"Keep it simple"/ "Keep it natural"

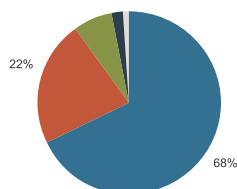


Cost and maintenance

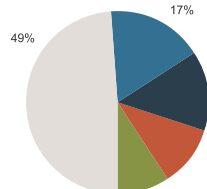
Above are top five priorities chosen by respondents for the planning and design of Lardeau Regional Park.



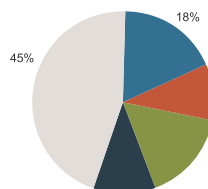
88% of respondents agree or strongly agree that improvements to the park should be **minimal** and focused on **protecting natural values and resources**.



90% of respondents agree or strongly agree that improvements to the park should reflect a **rustic Kootenay character**.



63% of respondents disagree or strongly disagree that future park facilities should support **motorized watercraft uses**.



56% of respondents disagree or strongly disagree that future park facilities should include the **construction of a wharf**.



VISION

Lardeau Regional Park is an oasis for people and wildlife alike. Visitors to the park appreciate the balance between respectful recreation and the ecosystems that thrive here. The park is a great place to walk the trails, observe wildlife, swim, paddle, and the spectacular views along the beach. This park is for everyone. Visitors and locals can enjoy this place which is both serene and tranquil, and full of vitality and life.



ENVIRONMENT

Protect and enhance the rich natural environment and ecosystems.

- Identify and protect sensitive areas and species, e.g. restrict vehicular use on the foreshore.
- Actively manage ecosystems, including monitoring of invasive species.
- Encourage stewardship and learning among residents and visitors through both interpretive signage and site-specific interventions.
- Maintain and enhance desirable habitat for migratory birds that use Lardeau as a stopover.
- Provide opportunities through design for bird/wildlife viewing.



SENSE OF PLACE

Reflect the undeveloped and relaxed character and values of the Kootenays.

- Stay true to local character and values; let those guide the design and planning process.
- Keep interventions thoughtful and minimalistic.
- Celebrate cultural and natural assets elements



RECREATION

Create opportunities for recreation and access that are environmentally and locally sensitive, and can coexist with environmental objectives.

- Improve water and beach accessibility while protecting the foreshore
- Improve vehicular circulation.
- Promote and provide opportunities for non-motorized activities on the lake, such as paddle boating and kayaking.
- Maintain and enhance the trail system to facilitate this high-interest activity
- Strategically locate areas of active and passive recreation to cause the least disturbance to existing ecosystems.

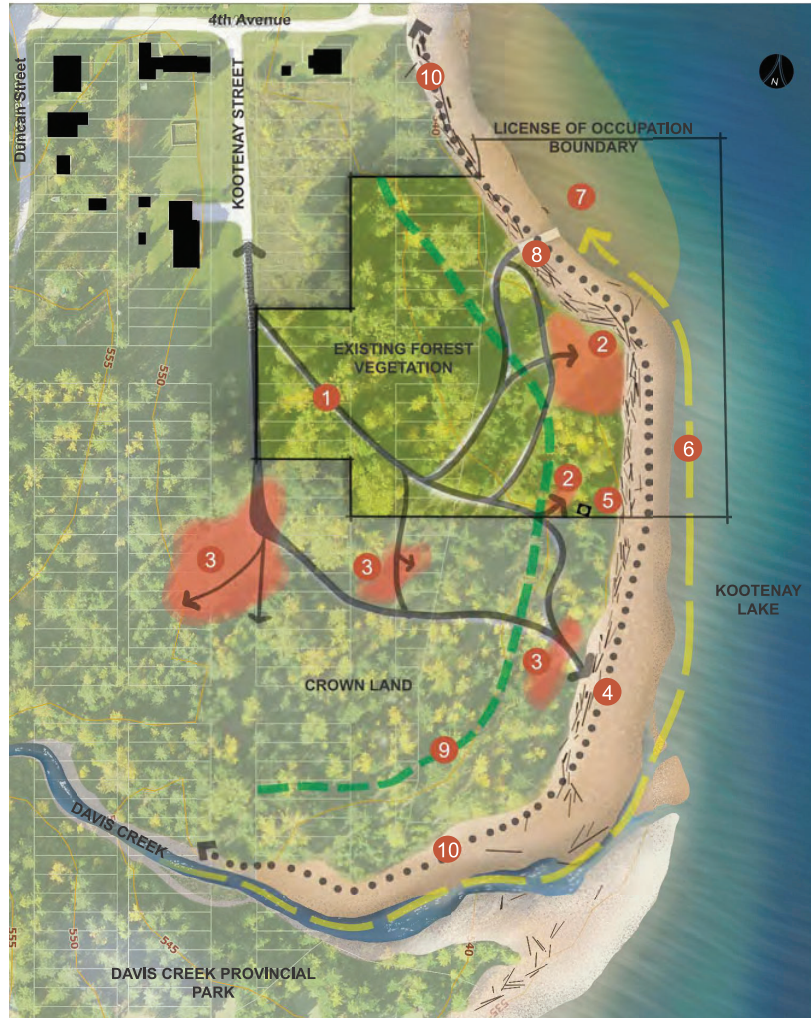


PARK MANAGEMENT

Advance the successful co-management of the park between the RDCK and the park users

- Continue to receive feedback from the local community, and to respect the rights of stakeholders.
- Efficient management of staff resources regarding park maintenance.
- Plan and manage park in a way that minimizes fire risk.
- Provide public amenities that support visitor enjoyment and environmental protection such as: a small washroom facility, way-finding and interpretive signage, garbage management, and rest opportunities.

SITE ANALYSIS

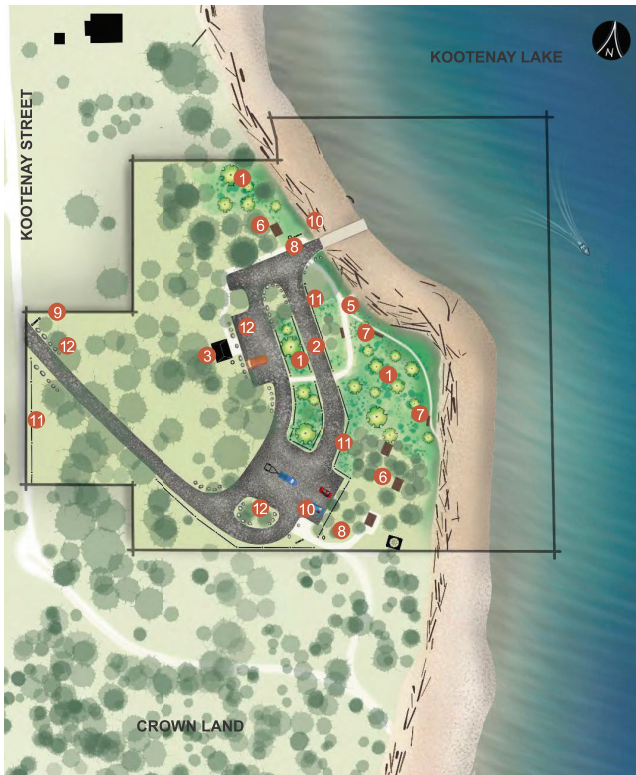


LEGEND

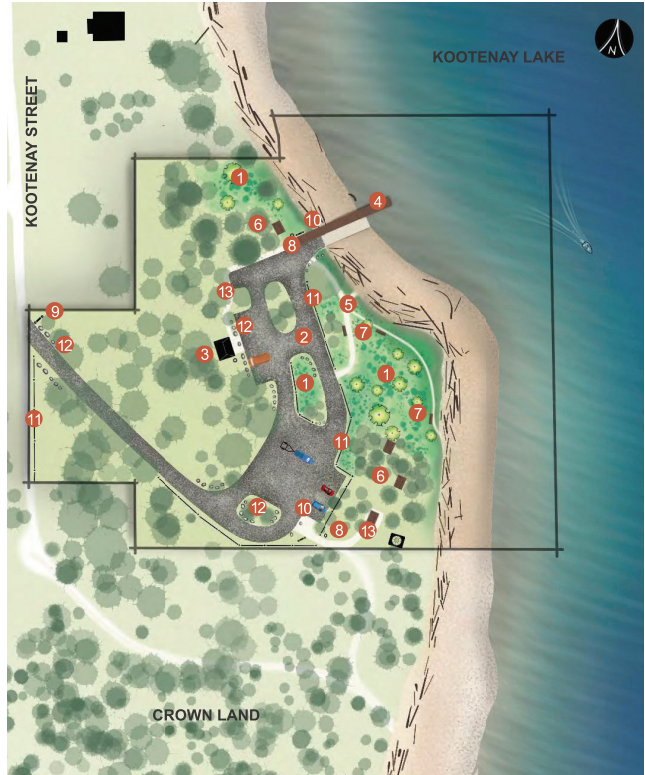
- 1 INFORMAL VEHICLE ACCESS
- 2 INFORMAL PARKING
- 3 INFORMAL CAMPING AND PARKING
- 4 VEHICLE ACCESS TO BEACH
- 5 LIGHTHOUSE
- 6 FLOW OF SEDIMENT
- 7 SEDIMENT ACCRETION ZONE
- 8 BOAT LAUNCH
- 9 APPROXIMATELY 30M FROM HIGH WATER
- 10 PEDESTRIAN MOVEMENT ALONG SHORE



PARK CONCEPT PLAN OPTIONS



OPTION A1



OPTION A2



OPTION B

LEGEND

- 1 RIPARIAN VEGETATION RESTORATION
- 2 IMPROVED PARKING AND VEHICLE CIRCULATION
- 3 WASHROOM / PIT TOILET
- 4 WHARF STRUCTURE
- 5 MAINTENANCE ROAD/TRAIL
- 6 PICNIC TABLE (TYP.)
- 7 BENCH (TYP.)
- 8 WASTE RECEPTACLE (TYP.)
- 9 ENTRY SIGN
- 10 INTERPRETIVE / REGULATORY SIGNAGE
- 11 VEHICLE EXCLUSION BARRIER / FENCE
- 12 BOULDER BARRIER
- 13 WHEELCHAIR ACCESSIBLE PATHWAY
- 14 HIGH-WATER TRAIL



Lardeau Regional Park Management Plan Open House Questionnaire



1. I support the draft vision statement?

Strongly Disagree ----- Disagree -----Neutral ----- Agree ----- Strongly Agree

2. I support the objectives?

Strongly Disagree ----- Disagree -----Neutral ----- Agree ----- Strongly Agree

3. I support the option A1 draft concept plan?

Strongly Disagree ----- Disagree -----Neutral ----- Agree ----- Strongly Agree

4. I support the option A2 draft concept plan?

Strongly Disagree ----- Disagree -----Neutral ----- Agree ----- Strongly Agree

5. I support the option B draft concept plan?

Strongly Disagree ----- Disagree -----Neutral ----- Agree ----- Strongly Agree

6. What elements of the concept options do you most agree with?

7. What elements of the concept options do you most disagree with?

8. Any other comments?

If you have not done so already, please provide your email address if you would like further communication about upcoming community engagement events and project updates. Your email address will be used and stored to comply with the British Columbia's Freedom of Information and Protection of Privacy Act (FIPPA).
